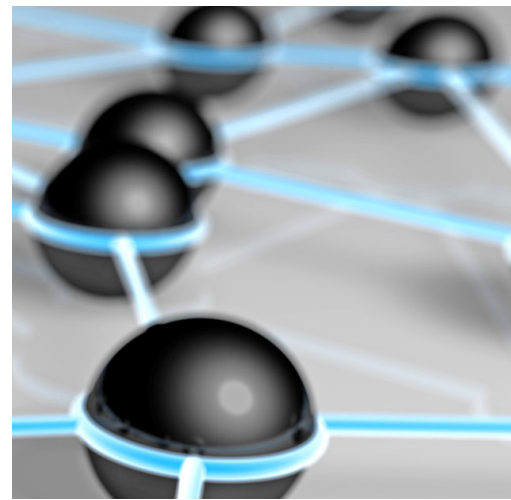
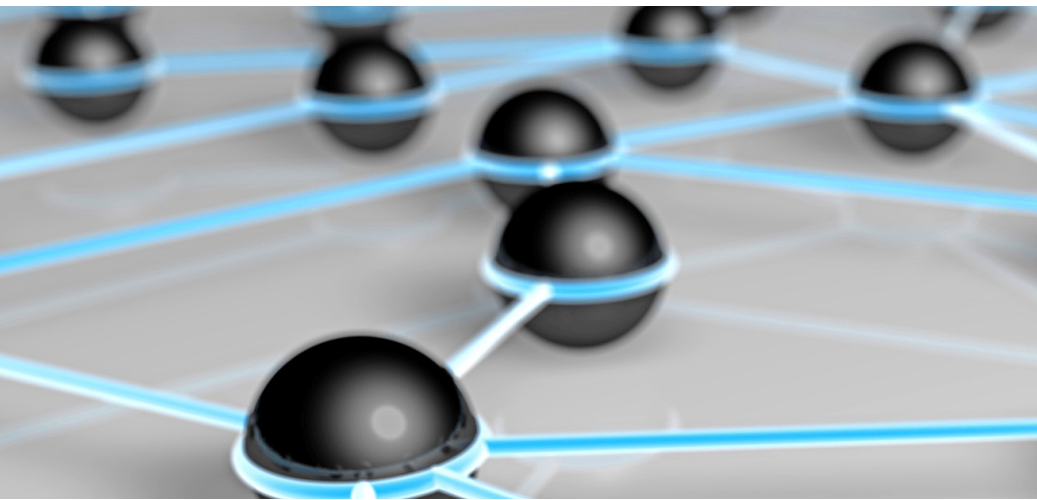




360° RFID | our knowhow - your value



Administration

Manage RFID easily

The **Admin Module** is your professional administration and software distribution tool for all **detego**® products.

Admin Module guarantees process security for your IT-system. Just choose the appropriate module for your application and select the RFID/Auto-ID hardware.

Benefits

- ▶ Simple administration of your RFID/Auto-ID landscape
- ▶ Easy RFID device management
- ▶ Clear version control for all **detego**® products from one point
- ▶ Convenient overview with the Admin Module as a Web Application or Windows Service
- ▶ Configurable mail alert system for the IT administrator



Status Monitor

The Status Monitor monitors and controls the activity status of your work stations, individual **detego**® SUITE modules as well as all RFID and Auto-ID devices.

Event Monitor

With the Event Monitor you visualize all the events of your modules, RFID/Auto-ID hardware and its connectivity. An easy-customizable notification system informs your IT administrator about changes or error conditions throughout the system.

Track & Trace Monitor

Keep track of your products in the process flow from a central point. Each transponder attached to the product delivers its unique identification number to the Track & Trace Monitor. You can filter your display to track the movement of specific units.

Project Configuration

With the Configurator you create your personal RFID infrastructure. Define, configure and update your RFID landscape centrally and save intensive and expensive maintenance on site.

User Setup

Assign all authorizations to manage your RFID landscape simply. With the Admin Module you assign roles for administration and configuration of the RFID landscape and for the monitoring of individual stations.