



Plug & Trace

Excellent RFID Solutions

RFID Document
Management

RF-iT[™]
Solutions

RFID Document Management

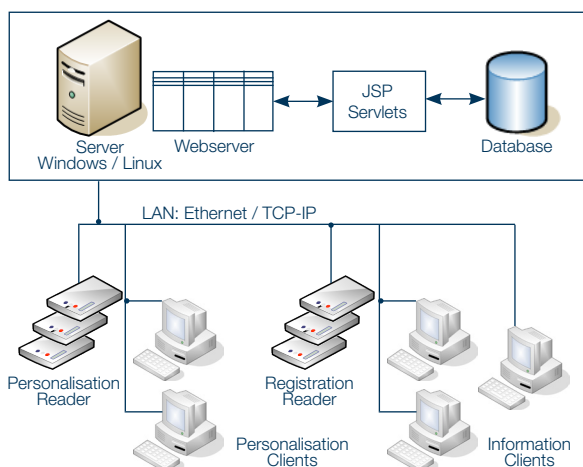


detego[®] docutracer enables printed documents to be conveniently tracked and traced. The solution combines advanced web-based software with leading-edge RFID technology. Today companies and institutes spend lots of time searching for printed documents which is cost intensive and inefficient. The problem was not solved because previous solutions were complex and expensive - often based on dated technology.

A simple web-based application has been developed and successfully implemented e.g. at patent lawyers and hospitals. The application only needs a standard web browser on the client PC's and stores all data in a SQL database, which is installed on a central server in the company.

Furthermore, the use of RFID allows easy identification of multiple documents as they are passed from person to person - or department to department.

- ▶ All documents get an RFID tag when they are initialized
- ▶ Documents are checked in/out at RFID terminals at each „office door“
- ▶ Bulk reading of documents is possible
- ▶ Allows convenient checks in/out
- ▶ Fast tracking and tracing of documents in a web application
- ▶ Allocation of the user, who is currently handling the documents
- ▶ Plug & Play installation
- ▶ Central document server



Benefits

▶ Cost Reduction

- Save time and effort in finding documents
- Use standard web browser to locate your documents
- Fast and easy check-in of documents (bulk reading; display with booking feedback)
- ROI at patent lawyer in Munich: 1 year

▶ Easy Start

- Save time Works with your existing Ethernet/LAN network - no need for special cables
- Web-based configuration of readers - fast installation
- No software to be installed at search clients (standard web browser)

▶ Low Maintenance Cost

- Offline booking capabilities of reader work even when network is not 100 % available
- Reader work stand alone (independent of PCs availability/operation)
- Central reader monitoring
- Security mechanism to protect system
- Central database eases backups

▶ Ready for the Future

- Extensible to multi-site scenarios (Intranet or VPN connection required)

Technical Data

Requirements for a typical scenario with 1 Tube controlled by a Tube Manager:

- ▶ Offline booking capabilities of reader
- ▶ CPU: at least 400 MHz
- ▶ RAM: 256 MB (Tube & Tube Manager: 80 MB)
- ▶ Hard disk: at least 1 GB (Tube & Tube Manager: 100 MB)
- ▶ MS Windows XP Professional SP2 (32 Bit), MS.NET Framework 2.0 or MS Windows 2000 SP3 or MS Windows 2003 Server

RF-iT Solutions is certified partner of Microsoft and SAP and official solution provider of GS1.